



SOCIETY'S MAY MEETING HELD AT THE JACKSON BLACKSMITH SHOP

The Historical Society held its May meeting at the Jackson Blacksmith Shop. The Mabry family hosted the Spring meeting with a tour of their family owned blacksmith shop and gave demonstrations of the trade that were operated there. This is the only Goochland blacksmith shop that remains in working condition. Board member Jeff Mabry provided a history of the Jackson family, as well as an explanation of the tools and processes that go on in the shop. *Photographs by Phyllis Silber*



ABOVE: Jeff Mabry, curator of the Jackson Blacksmith Shop, demonstrates fire temperature by the color of the flame. Assisted by his nephew, Jeff heated an iron bar and then hammered it to create a bend in the bar to form a hook.



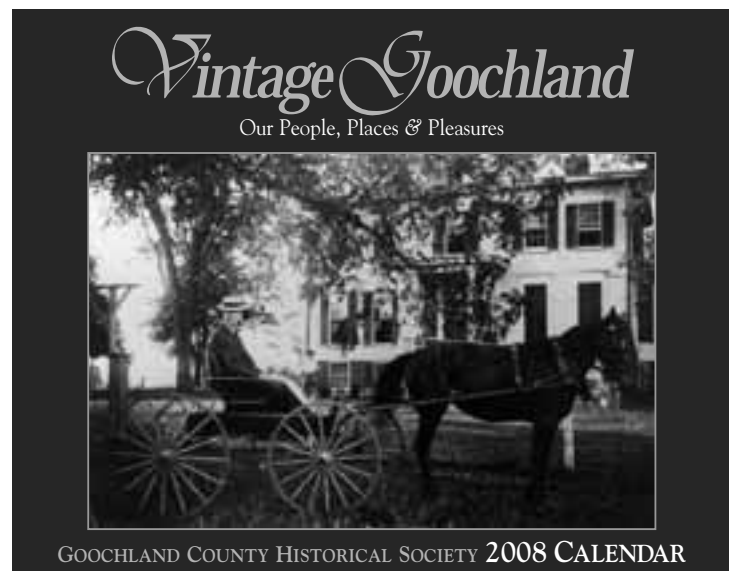
LEFT: Society members listen as Jeff explains the history of Blacksmithing in Goochland County.

SOCIETY TO CO-HOST A STATE WIDE MEETING OF HISTORICAL SOCIETIES AT THE LIBRARY OF VIRGINIA

SAVE THE DATE: SATURDAY, DECEMBER 1, 2007

The Goochland Historical Society is partnering with the Henrico Historical Society, VCU, the Library of Virginia, the APVH, and the Valentine Museum to host a state wide conference for representatives from each of the Historical Societies across the state. This will be the first time a meeting of this type has ever been held. The morning sessions will feature a keynote speaker, and a panel discussion with leaders from State agencies and affiliations. In the afternoon a series of workshops will be presented dealing with issues that may be facing Historical Societies. A box lunch will be provided. Information about the conference and the registration fees will be forthcoming.

SOCIETY PUBLISHES ITS 3RD "VINTAGE" CALENDAR



See page 6 for details.

MESSAGE FROM THE PRESIDENT

First of all let me say how pleased I am that Andrew Donnelly has agreed to serve as First Vice President of the Society (Programs). A former Marine and a long-time investment advisor, Andy, along with treasurer Fred Sorrell, developed the investment policy for the society that was adopted at the January meeting of the Society's Board. Andy is a relative newcomer to Goochland, having been here for three years. He was a long time resident and Supervisor in Prince William County. As First Vice President, Andy follows Sharon Perdue who was the architect (along with Phyllis Silber, our Executive Director and other contributors) of a long string of programs of which I am especially proud. Sharon has moved on to be chair of the reconstituted Goochland Historical Marker Program which hopes to process its first marker application in the next few months.



A few weeks ago, Andrew Donnelly, Treasurer Fred Sorrell and I went to visit Earl Henley and his wife Lois. Andy, who has known Earl from the time when they both attended State conferences for county supervisors, set up the meeting. Our purpose was to ask Earl to reminisce about his time as a supervisor, Chairman of the Board of Supervisors, and as Fire Chief, which he did with eloquence. We recorded the session with superb audiovisual recording equipment brought along and operated by Fred Sorrell.

This recording session yielded a number of extra dividends. From Lois we received a written account of the early history of the Goochland County Health Department, especially including reminiscences of the visiting nurses program in which she served. I found this account of life in the County around the time of

my childhood beautifully written and moving. I hope to see it in print in the Society's magazine.

We also took away a copy of Earl's account of his experiences on Iwo Jima where he participated in the desperate struggle for the island and saw the famous flag raising on Mount Suribachi. His account is all the more interesting because it appears to have been written shortly after the events it describes and captures the feelings of Earl and other young marines who were with him.

My visit with Lois and Earl has been a highlight of my time as President.

I have every hope that we can have more of this kind of interview. Members of the Society should consider suggesting candidates to Phyllis, to me or to any board member.

As noted elsewhere in this newsletter, the Society's 2008 calendar is about to be delivered from the printer. Once again, we all have to thank Doug Price and his calendar committee, along with Executive Director Phyllis Silber, who did the research for and wrote most of the captions, for their outstanding effort. In addition to a huge amount of work, the calendars require a lot of publishing expertise, especially from Doug. I am happy to report that your board made an extra effort and achieved enough pre-publication sales to area businesses to pay for the printing.

Now that the very capable Linda Hardwicke has retired as her assistant, Phyllis's time is more valuable than ever. Many thanks, once again, to the many volunteers who keep her from being overwhelmed by the phone and visitors while she wrestles with a formidable number of projects.

Respectfully submitted,

Temple Bayliss, *President*

Recent Gifts to the Society

Dr. James Bowles	Family photographs
Courthouse Gang	Photographs & memory essays
Helen Best Heinzer	Photographs & artifacts
Kay Higgins	Photograph of Smith's Store
Louise Thompson	1982 Telephone Directory
Margaret Walker	Photographs of Goochland
Ed and Judy Wilson	History of Black Cemeteries
Centerville Homemakers Club	\$100
Estate of Rogers Meador	\$1,000
Goochland VFW	\$1,253
Jay Wright	\$100

Welcome New Members (Since May 31, 2007)

The Society is pleased to welcome these new members:

Reva and George Alvis, Jr	<i>Mankin-Sabot</i>
Centerville Homemakers Club	<i>Crozier</i>
Louise Chapman	<i>Goochland</i>
Pamela J. Cooley	<i>Amherst, New Hampshire</i>
Rebecca R. Dyer	<i>Alexandria, Virginia</i>
Justina Bowles Hundley	<i>Dabneys, Virginia</i>
David and Georgia Gooch	<i>Portland, Oregon</i>
Sam and Sherry Kidd	<i>Whitehouse, Texas</i>
Clark and Harriet Meader	<i>Maidens</i>
Deborah D. Stanley	<i>Richmond</i>
Mr. Toshio Takashima	<i>Maidens</i>
Nancy England Tears	<i>Tampa, Florida</i>

2008 VINTAGE GOOCHLAND CALENDARS WILL DEBUT AT FIELD OF THE PAST

Field Day of the Past has graciously provided space to the Historical Society during the annual event, September 21-23, 2007. We will have an exhibit of artifacts and museum shop items for sale. The 2008 calendar will be front and center of the exhibit.

Pre-printing sales of the 2008 calendar have been excellent. It is heartening that so many local businesses and individuals recognize the important work we do by purchasing calendars. The calendar sale and the biannual house tour are our only fund raisers. So the Society sends a huge thank you to the following businesses and individuals. When you visit any of these companies, please tell them how much you appreciate what they are doing for the Society.

Bank of Goochland	Tommy Browning
Browning Construction	Frankie Carter
Carter Realty	Paige Parker
Creative Styles	Gerry Nuckols
Crozier Construction	Wayne Dawson
Dawson's Pharmacy	Vernell Burton
Goochland Realty	Tommy Taylor
Goochland Restaurant	Leigh Gordon
Gordon Construction	
Hermitage Country Club	Ken Grubbs
Home Equity Mortgage	Louise Thompson
Joyner Fine Properties	J. T. Lacy
Lacy Appliances	Edward Lane
Lane Homes & Remodeling	Gail Lloyd
Long and Foster Realty	Charles Luck IV
Luckstone Corporation	Darin Witten
Manakin Grill	Andrew Donnelly
Merrill Lynch of Richmond	Michael Parrish
Michael Parrish & Assoc., Inc.	Carol Harding
NorthStar Excavating, Inc.	Rachel & Jim Parker
Parker Properties	
Richmond Country Club	
Ned Creasey	
Thomas V. Smith, CPA	
Town & Country Real Estate	Scott Gaeser
Virginia Custom Buildings	Rodney Harrison
Virginia Properties	Dan Rogers
Wedgewood Properties	Ken Joyner
Wood's Sandy Hook Store	Mary Beth Wood
Woodson Auto Sales	Tommy Woodson

SECOND UNION SCHOOL HIGHWAY MARKER

On Sunday, October 21, 2007, a ceremony to unveil Goochland's newest highway marker will be held. The Virginia Department of Historic Resources paid for the marker as a part of the new diversity program at the DHR. The Historical Society worked with the DHR to compose the wording. The public is invited to the event. A later announcement with exact times and directions to the school will appear in the local newspapers.

MORE VOLUNTEERS NEEDED

As the Society continues to grow and serve the community, the need for volunteers is increasing. Many of our volunteers come two days out of every month; some just come one day. Our hours are from 10 a.m. until 3 p.m. Some volunteers work a portion of the full day but most of us stay until three o'clock. The work at the Center is as varied as the skills you might bring to the volunteer job. We need help with filing pictures, documents, and artifacts. We need computer help. There is always shelving books and organizing in general to be done. If genealogy is an interest, we provide training in how to use the resources at the Center. Sometimes just having someone to answer the phone and take messages is such a big help. Please give us a call if you can donate some time. Marty MacMillan is Volunteer Chairperson and will contact you right away.

NEW IN THE LIBRARY

- **Southside Virginia Genealogies** on CD. A compilation of several hundred family histories, each of which, typically, extends back to the colonial period in Southside Virginia. This remarkable CD compilation actually began life as an Internet site—Virginians.com—and it has racked up more than a million visitors since its inception in 2001. Since then it has grown to 4,000 pages and continues to be a popular destination for anyone researching Southside lineages. However, it has recently been configured to include only first generation data, so this new CD version of *Southside Virginia Genealogies* is now the only means of gaining access to the full range of information on all generations. The Goochland Historical Society has received a complimentary copy of the CD from the author, John Pritchett. The CD is \$39.99 plus postage and can be ordered from www.Genealogical.com

- **BLACK GENEALOGY: How to Begin**, by James D. Walker

From the Forest Sheets Library the following items have just been accessioned:

Journal of the Afro-American Historical and Genealogical Society: Volumes 3, #4; 4, #1- 4; 5, #1- 4; and 6, #1- 4.

Invite your friends to become members in the Historical Society. Consider giving special friends a gift membership.

Membership in the Goochland County Historical Society is open to all persons who have an interest in history and preservation. You are cordially invited to join us in this exciting and fulfilling endeavor. Memberships are annual. Contributions to the Society above \$15.00 are tax deductible.

Types of Memberships

JAMES RIVER	\$500 and up
BYRD CREEK	\$250 - \$499
GOLD MINE	\$100 - \$249
COURTHOUSE	\$50 - \$99
BUSINESS	\$50
TUCKAHOE CREEK	\$25 - \$49



RECENT SOCIETY VISITORS

ABOVE: David Curd of Tempe Arizona visited the Society in June to research his Curd ancestors and tour the area with board member Doug Price. David, a major supporter of the Society at the James River membership level, is a descendant of Edward Curd of Henrico who patented more than 2600 acres in Goochland County. Edward's grandson, John Curd, Jr., inherited part of Edward's land from his father John, Sr., including land whereon Beaver Dam Episcopal Church was built in 1764. (See article about Beaver Dam Church and the Curd family line in the 2007 GCHS Magazine.) David Curd is seen here standing at the Price farm on Maidens Road which was part of a 879-acre plantation owned by a third John Curd. This John Curd was a great-grandson of Edward. Col. John Curd was a member of the St. James Northam Vestry. His son-in-law, Benjamin Anderson, owned the large tavern featured in the GCHS 2007 calendar that was built before 1800 across River Road from the second Goochland Courthouse. Anderson sold the County two acres of land where the third and present Courthouse was built in 1826.



The Centerville Homemakers Club. Front row from left: Ruby Martin, Judy Mucha, MaryAnn Valentour, Suzanne Keller, Mary Arbaugh. Second Row: Jean Fields, Ann James, Pat Scott, M.J. Weatherford, Fern Lane. Back Row: Reva Alvis, Phyllis Silber, Ann Nuckols, Shirley Sprouse, Ann McJunkins and Gale Chasisso



Pictured are some of the participants in a Tour of Goochland organized by the Mixing Bowl U, a Division of Center for Caring. From left, Shirley Netherland, Dottie Reynolds (Tour Leader), Mary Southall, Gloria Turner, Anne Brown, Pat McClung and Janice Rauh. The tour was organized by Patti Walton and Dottie Reynolds.



Sophia Pryor shares pictures and memories with Mrs. Agnes Roane of Goochland. From left, Lelia Roane from Alexandria, Mrs. Roane, Carol Waddy, Sophia Pryor



Mealy Family Reunion. ABOVE: First Place float in the Mealy Family Reunion's parade. Judges for the parade from left, Phyllis Silber, Calvin Hopkins, and Earline Pace.



RECOGNIZE ANYONE?

From time to time the Society will receive photographs in bulk from an estate or a box at a yard sale. These pictures are an important resource for period costumes, geographic information, and local customs. But the most important image in the photograph remains an unknown entity. We have decided to print some of the photos from time to time in the hopes that some one will

recognize the persons in them. Pictures will also be posted on our web site at www.goochlandhistory.com.

These two photographs were associated with the Bowles family out in Tabscott. The pictures were considered for the 2008 calendar but we were unable to identify them for the captions. If you do recognize any of these people, please contact the Society.

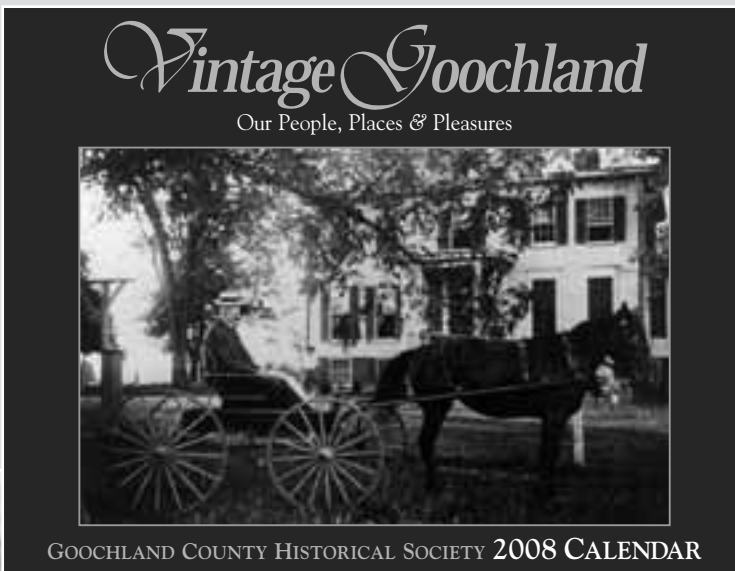


2008 VINTAGE GOOCHLAND CALENDAR PREVIEW

Here are a few of the photographs of Goochland's people & places from bygone days in the Society's all new 2008 wall calendar.

THE PERFECT GIFT.

Each month of this custom designed calendar is beautifully illustrated with vintage images from bygone days and printed in sepia-toned colors on premium paper. The size is 11" x 17" hanging.



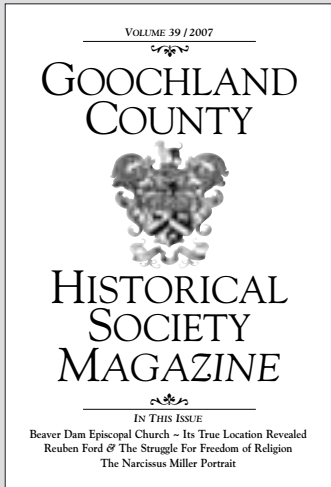
Calendar features national holidays, County board of supervisors' meetings and school holidays. Pages provide ample space to write daily notes.

\$8.00 ea., 5 or more \$35.00



This specially created calendar is unique to Goochland County. It is beautifully illustrated with sepia-toned photographs suitable for framing.

TO PURCHASE FEATURED ITEMS: Visit the Museum Shop, or order from our website at www.goochlandhistory.org, or order by mail. To order by mail, please send your name, mailing address, daytime phone number, and check to include the order amount plus 15% of the order amount for shipping & handling. For MAPS, add an additional 4.00 to the total. Please make checks payable to the Goochland County Historical Society.



Recent Issues of the Magazine

VOLUME 39 / 2007

In this issue:

Beaver Dam Episcopal Church - Its True Location Revealed
 Reuben Ford & The Struggle For Freedom of Religion
 The Narcissus Miller Portrait
 112 pages with index - **\$9.00**

VOLUMES 37&38 / 2005-2006

In this issue:

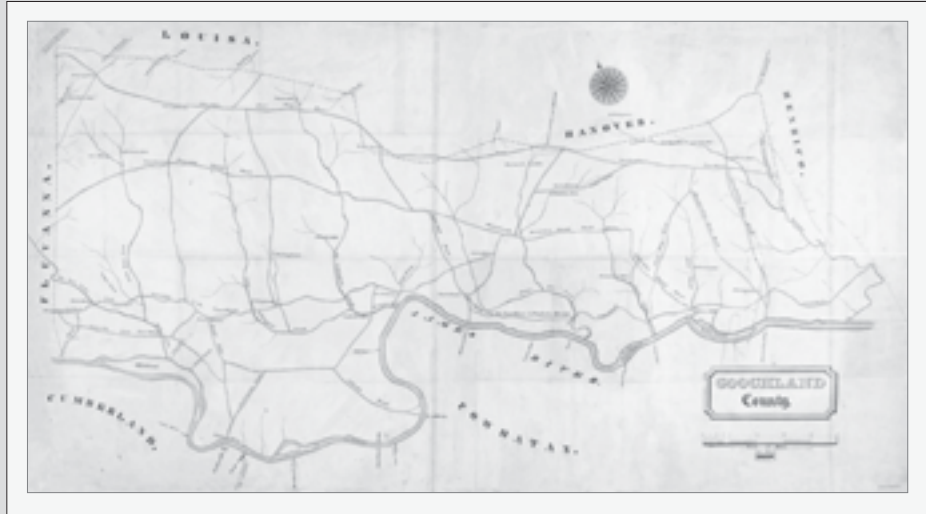
Soft Coal & Hard Times - Dover & Other Coal Mines
 Orphans of Goochland 1728-1757
 Goochland 1815 Landowners Tax List
 112 pages with index - **\$9.00**

VOLUME 36 / 2004 (Sold Out)



Goochland Yesterday and Today by Cece Bullard

A pictorial history of famous places, people, and homes in Goochland. This 8½" x 11" coffee table hardback book is 185 pages of photographic treasures, with index. Reduced from \$40.00. **\$30.00**



1820 Map by John Wood - \$15.00 (See map shipping information at bottom of facing page.)

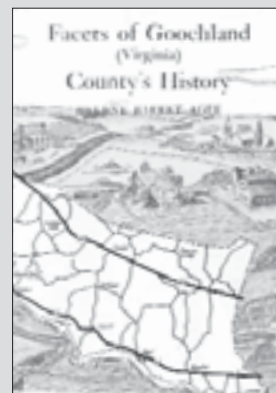
This map is the earliest known map of Goochland County. It was reproduced from the collections of The Library of Virginia. It shows the location of many of the taverns, ferries, and mills as well as roads that are no longer in use. Reproduced on acid free, heavy weight paper in full color, the map measures 32 x 20 inches.



1863 Gilmer Map - \$20.00 (See map shipping information at bottom of facing page.)

Known as "The Gilmer Map" this map dates to 1863. It is a detailed map which contains the names of land owners, churches, schools, gold mines, and other sites in Goochland County. Reproduced in full color on acid free, heavy weight paper from the Collections of the Virginia Historical Society who gave the Goochland County Historical Society permission to print and sell this map. It measures 32 x 18 inches.

Purchase both maps as a pair and save \$5.00 - Both for \$30.00



Facets of Goochland County History

by Helene Barret Agee
 216 pages of highlights of the County's history with index.
 Hardback. 6¼" x 9¼"
\$25.00



Suncatcher

3" Medallion of Goochland Courthouse in a raised gold gold image on a blue glass background. **\$15.00**

Phyllis Silber, *Editor*
Douglas Price, *Designer*

(804) 556-3966

Society Phone & Fax

Visit the Society's Website
www.goochlandhistory.org

E-mail the Society
goochlandhistory@verizon.net

Summer hours (April - September) are:
Tuesday - Friday, 10:00 a.m. - 3:00 p.m., or
by appointment. *Those traveling long
distances should call the Society to confirm
it will be open that day.* (804) 556-3966

Visit the Goochland Historical Society
The Society's headquarters are located a
half mile east of the Goochland Courthouse
at 2875 River Road West (Route 6).

Goochland County Historical Society
P. O. Box 602
Goochland, Virginia 23063

Nonprofit Org.
U.S. Postage
PAID
Goochland, VA
Permit No. 19

UPCOMING FALL MEETING

GOLD MINING

Will be held at Mount Gilead Baptist Church
SUNDAY, OCTOBER 7th, 3:00 p.m.

Ben Vaughn, President of the Central Virginia Gold Prospectors group, will discuss the history of gold mining in Virginia. The Tabscott area was once the center for mining in Goochland. The meeting will be held at historic Mt. Gilead Baptist church. The church just celebrated its 175 birthday. Sophia Pryor will provide a short history of the church and surrounding area. After the meeting, members will have an opportunity to try panning for gold using a sluice provided by the CVGP. CVGP is affiliated with Gold Prospectors Association of America (GPAA). CVGP is a non-profit group promoting the hobby/recreation of Gold Prospecting, and making it more enjoyable and rewarding for those already involved. www.centralviriniagoldprospectors.com
All members are invited to bring a potential new member to this meeting.

DIRECTIONS: Mt. Gilead is located south of I-64 and Route 250 at 4768 Shannon Hill Road, at the intersection with Route 603. From I-64 or Route 250 (Broad Street) exit south onto Shannon Hill Road. From Route 6, go North on Route 522 in Goochland Village to Broad Street and then West to Shannon Hill Road. North on Hadensville-Fife Road at George's Tavern will also connect to Broad Street and then West to Shannon Hill Road.



Goochland County Historical Society
Phyllis Silber, *Executive Director*

BOARD OF DIRECTORS 2007

- Temple Bayliss, *President*
- Andrew Donnelly, *1st Vice President*
- Sebastian Volcker, *2nd Vice President*
- Ruth Quarles, *Secretary*
- Fred Sorrell, *Treasurer*
- Howard Cobb
- Carolyn Comerford
- Morton Eggleston
- Kay Higgins
- Jeffrey Mabry
- Sharon Perdue
- Louisa Preston
- Douglas Price
- Carol Salmon, *Archivist*
- Louise Thompson
- John Twombly IV
- Ed Wilson

John M. Williamson, Esq., *Registered Agent*