



GOOCHLAND COUNTY HISTORICAL SOCIETY

Founded May 1, 1968

HISTORIC ROCK CASTLE SITE OF MAY MEETING



The Queen Ann Cottage at Rock Castle built c.1732 by Tarleton Fleming.

BY SHARON PERDUE, *Program Chair*

Although it was a rainy day, more than 75 members attended the Spring Program Meeting. Our speaker, Calder Loth, talked about the people, the land and the buildings of Rock Castle, mixing current day with history. The meeting took place in the main house. Refreshments, under the skillful hand of Katherine James, were served in the dining room. A visit to the historic Queen Anne Cottage provided a grand finale.

A large rock outcropping on the nearby James River most likely provided the name for the Rock Castle area. Important Native American settlements were located nearby, centuries before the colonies existed. In 1732, William Byrd persuaded Tarleton Fleming, an ancestor of Loth, to

move from New Kent to the frontier at Rock Castle. The property was passed down through the Flemings for several generations, then changed hands several times. In the 1930's the owner was James Osborne and his wife, who was a cousin by marriage of the current owner. There are many Goochland family connections to the Flemings.

On the Rock Castle property, a house now called Queen Anne Cottage was built during the reign of George II. This cottage is an example of classic Virginia traditional colonial architecture, patterned on English homes, with several modifications mainly due to the different weather in Virginia. Virginia is much hotter and dryer than England. Therefore, Virginia homes had smaller and fewer windows, higher ceilings and were higher off the ground. The house is smaller than current houses, but one must remember that for safety reasons and creature comforts, functions such as cooking and refrigeration took place in out buildings. If all of the outbuildings of the time had been attached to the house, it would have been a 15-20 room home. Damask was used to cover some of the walls in the Cottage rather than paneling, as was the normal practice. An insurance policy written in 1802 valued the house at \$2500. "A fine house" said Loth.

History not only affects people, but also homes. In 1781, during the Revolution, Banastre Tarleton, a British officer know as the Butcher, contemptuous of Americans and a distant relative of our own Tarleton Fleming III, set the house on fire when he saw the Tarleton coat of arms on the wall. Rock Castle slaves put out the fire. During the Civil War, Union troops led by General Sheridan raided the plantation and ransacked the house. Once again, the servants saved the home by preventing it from being set on fire.

In the 1930's, owner James Osborne decided to move the cottage to a different location on the property and build a Norman style house where the cottage had been. Currently, a peacock named Peac is a resident who flew in one day about 8-10 years ago and hasn't left.

In 1970 Rock Castle was placed on the National Register of Historic Places. Both houses and about 145 acres were also placed into a perpetual historic easement, which means it can never be developed or subdivided. The Queen Anne Cottage can never be demolished or changed without permission of the Commonwealth.

Photographs courtesy of Sandie Warwick



Program speaker Calder Loth, is Senior Architectural Historian at the Virginia Department of Historic Resources. He is the author and editor of numerous books, including *The Making of Virginia Architecture* and *Virginia Landmarks of Black History*. Seated in the background is Temple Bayliss, President of the Society.



Phyllis Silber (l-r), Francis Truett, C.T. Perdue, Judy Wilson, and Carolyn Comerford

MESSAGE FROM THE PRESIDENT

As Phyllis writes elsewhere in this newsletter, John Russell and his charming wife Peggy, of Greensboro North Carolina, visited the Historical Center in late June. They gave the Society color photographs of portraits of their late eighteenth and early nineteenth century ancestors, members of the Payne family of Goochland. These large (five feet by six feet), portraits are by an unnamed artist known to art history as the "Payne Limner." Since there are approximately thirteen of these Payne paintings, the Limner must have spent a couple of years in Goochland, probably staying in one or more of the Payne family houses in the northwest part of the county.

Seeing these fine, strong, somewhat primitive portraits makes me wonder if there are other family paintings of Goochlanders of which we should have photographs. If you have a portrait of a Goochlander of any epoch, or an interesting photograph, we would be grateful if you would make a photograph or copy of it, write out a detailed description of the subject and give it to us. It is our job to keep the best record we can of the people who have lived here, and you can help. Please be generous with copies of your treasures.

Speaking of the pictorial record, the images have been selected for the 2007 Goochland County Historical Society



Calendar. For me, these vivid pictures bring back a world in which there were few paved roads, lots of mules, a depressing lack of fresh paint on most buildings, plenty of time in the summer for fun, and a few stately homes—the Goochland of my childhood. I hope you find the calendar as exciting as I have.

Our visitors to the Society are very welcome, but without the support of our volunteers, they, and the often-ringing phone, would exhaust even the indomitable Phyllis. That would prevent the Society from getting out its publications or carrying out its projects. Many, many thanks to Marty McMillan and to all of you who have helped staff the center—we would be in a hopeless mess without you. I am particularly pleased that Sandra Lockhart and Andrew Donnelly have signed up as new volunteers. Many thanks also to Carol Salmon and to all of you who have helped with ordering and cataloging our acquisitions. Finally, thanks are due once again to our treasurer, Fred Sorrel, who also keeps our website and fixes the plumbing (the water bill had grown enormous), and to Sharon Perdue, who is planning another fascinating program for late summer or early fall.

Respectfully submitted,

Temple Bayliss, *President*

Invite your friends to become members in the Historical Society. Consider giving special friends a gift membership.

Membership in the Goochland County Historical Society is open to all persons who have an interest in history and preservation. You are cordially invited to join us in this exciting and fulfilling endeavor. Memberships are annual. Contributions to the Society above \$15.00 are tax deductible.

Types of Memberships

JAMES RIVER	\$500 and up
BYRD CREEK	\$250 - \$499
GOLD MINE	\$100 - \$249
COURTHOUSE	\$50 - \$99
BUSINESS	\$50
TUCKAHOE CREEK	\$25 - \$49

WELCOME RECENT NEW MEMBERS TO THE SOCIETY

Bonnie A. Agee, <i>Manakin Sabot</i>	Peggy Hite, <i>Goochland</i>
Minnie Alvis, <i>Goochland</i>	Kathleen Kilpatrick, <i>Crozier</i>
Virginia V. Atwell, <i>Silver Spring, MD</i>	Jeff & Mary Scales Lawson, <i>Greenville, SC</i>
Hilary F. Bowles, <i>Crozier</i>	Sandra S. Lockhart, <i>Goochland</i>
Dorothy E. Conner, <i>Fountain Hills, AZ</i>	N. Gordon Lohr, <i>Richmond</i>
Dr. & Mrs. Kenneth Cummings, <i>Stockton, NJ</i>	Johnny & Karen Mclaughlin, <i>Goochland</i>
Lou & Ed Dooley, <i>Lexington, VA</i>	Leota & Douglas Nuchols, <i>Manakin Sabot</i>
Sheri Eichler, <i>Bastrop, TX</i>	Sandra & Gerry Nuchols, <i>Crozier</i>
Faith G. Flythe, <i>Exeter, NH</i>	Jane Garrant Roane, <i>Richmond</i>
K.W. Gooch, <i>Lovettsville, VA</i>	Beverly Thurston, <i>Crozier</i>
Linda Hardwicke, <i>Richmond</i>	Jill & Andrew White, <i>Manakin Sabot</i>

SOCIETY STUDIES RESTORATION OF GOOCHLAND'S OLD STONE JAIL

Goochland's old stone jail on the Courthouse Square was thought to have been built about 1833 with rock from digging the canal. The floor of the jail was most likely stone as well since a dirt floor might have allowed prisoners to dig their way out. There was a two story iron cage cell on the south end of the building for the "more serious prisoners". There were smaller cells on the north end. The two story iron cage was removed in the 1930s. By this time the county had an arrangement with the James River Correctional facility to keep county prisoners at the state prison.

Following the removal of the iron cells, the jail building was used many years for storage by the offices of the Treasurer and the Commissioner of Revenue.



Around 1955 the Sheriff set up an office for himself and his deputy in the jail. Prior to then, sheriffs worked from their home. The Sheriff's office remained in the Jail until 1980 when the new courthouse buildings were opened. It was at that time that the Historical Society had a real home at last.

The Historical Society exhibit that currently is housed in the jail is suffering from poor environmental conditions. The Society Board has determined the exhibit will be moved to the county's new administration building. A committee has been appointed to study the feasibility of restoring the old jail to the way it would have looked when it was built. Several historical societies in the area have restored their county jails. Each society reports the interest and support of their community for the restoration.

Jail Study Committee Tours Hanover's Stone Jail

The Society's committee to study the jail's restoration recently visited Hanover County's Old Stone Jail. They were graciously welcomed by Mrs. W.C. (Lois) Wickham, Jr. and Judy Lowry from

the Hanover Historical Society. Lois serves as curator for the Old Jail and tells wonderful stories about life in the village when the jail was still in use.



ABOVE LEFT: Lois (Mrs. W.C.) Wickham, Historian and Curator of the Hanover County Stone Jail.

ABOVE: Howard Cobb, Fred Sorrell, Temple Bayliss, Mort Eggleston and Sharon Perdue, members of GCHS Board. Howard serves as chair of the Goochland Jail Restoration Committee.

LEFT: Interior of one room showing an iron cell and an interesting display of artifacts.

RIGHT: The heavy iron door to Hanover's Jail.



RECENT GIFTS TO THE SOCIETY

ARCHER PAYNE FAMILY PRINTS

These photographs of circa 1790 paintings are portraits of Archer Payne, his wife Martha, and two of their daughters, possibly Elizabeth and America. The portraits were most likely painted at *New Market*, Archer Payne's plantation in Goochland County near Othma.

Little is known about the artist; he was self-taught and was probably a local artist who was attempting to paint in the fashionable style of the Europeans. The artist has come to be called "The Payne Limner". A limner was an untrained, generally anonymous, artist in the Virginia colony.

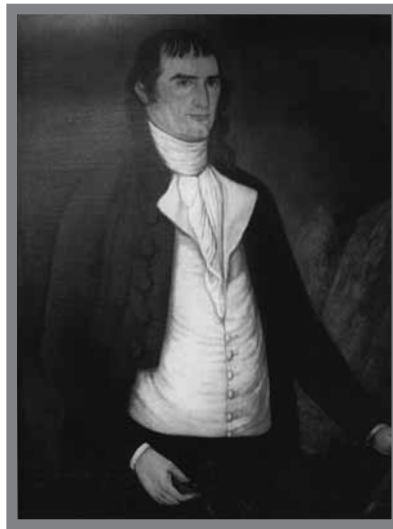
Captain Archer Payne served in the Goochland Militia in 1769. His wife was Martha Dandridge Payne, granddaughter of Governor Alexander Spotswood. A son, Alexander Spotswood Payne, inherited *New Market*. Archer was an uncle to Dolly Payne Todd Madison. Her grandfather, Archer's father, was Josiah Payne who built Hickory Hill in western Goochland.

The owners of the original paintings, John and Peggy Russell, had a limited number of photographic copies made to share with those who have a connection to the Payne family. The Society is delighted to accept this gift of prints.

For those who want more information about the Payne Family in Goochland, visit or contact the Society. The library has more than 100 references to the Paynes including:

1. Land grant to Josiah Payne from William Gooch
2. The Payne Family genealogy - 2 volumes
3. Photograph of New Market the Payne family home
4. Photograph of Rose Retreat
5. The Payne Limner a thesis by Elizabeth Lyon
6. Memoirs and Memories of Dolly Madison

As well as numerous references in Title abstracts from the 1800s.



Captain Archer Payne



Martha Dandridge Payne



Payne daughters (based on the birth record of the Payne children and the time in which these paintings were created, these girls could be Elizabeth (standing) and America (seated)).



Photo by Wes Hester

RIGHT: Phyllis Silber (l-r), John Russell, Peggy Russell, and Temple Bayliss.

GENEALOGY BOOKS - The Page Family

The following nine volumes of Page family information were donated by Dolores Rutherford.

Abstracts of Virginia Families

Vol I. P-Z

Page Family

Vol II. Part 1

Albemarle to Buckingham

Page Family

Vol II. Part 2

Campbell to Goochland

Page Family

Vol II. Part 3

Halifax to Old Rappahanock

Page Family

Vol II. Part 4

Orange to York

Page Family in Virginia

Census 1790-1850

Page Family in Virginia

Personal Property Tax

1782-1850 Vol. I

Albemarle to Giles County

Page Family in Virginia

Personal Property Tax

1782-1850 Vol. II

Gloucester County to Winchester City

Page Family Records in Virginia Counties

A Summary and Bibliography for each County

BOOKS FROM "AIRY POINT"

Harry and Jane White donated a Holy Bible Holman edition 1884 that belonged to Thomas Turner and a library edition of Funk and Wagnall's Dictionary of the English Language given to Mary Turner by "her precious father."



BOTTLES & ARTIFACTS FROM POWELL'S TAVERN

These are a few of the vintage bottles and wooden artifacts found during the renovation of Powell's Tavern. They were donated to the Society by Ralph Higgins of Richmond.

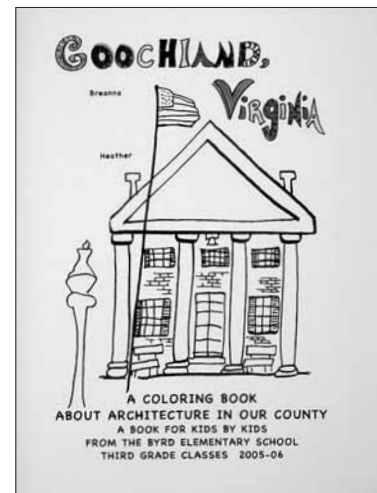


LINSEY-WOOLSEY BLANKET, DOLL & CHRISTENING DRESS, LACE TABLE RUNNER, OAK STAND & CHAMBER POT. ITEMS NOT PICTURED: JEWEL BOX, BOOKS, VINTAGE CHAIR, VIVIAN KNIGHT BOWLES FAMILY DOCUMENTS

Justina Bowles Hundley graciously donated several family items to the Historical Society. Pictured here Justina is holding a doll wearing her mother's christening dress and a table runner that was made by her mother. In front of Mrs. Hundley is an oak stand with chamber pot and atop the stand is a pre-civil war linsey-woolsey blanket. Gifts not pictured are a jewel box, several books, a vintage chair and documents from the Vivian Knight Bowles family. Justina is the daughter of Vivian Knight Bowles and Augusta Davis. Most of these items are from "Norvue", childhood home of her mother.



Detail of linsey-woolsey blanket and lace table runner



COLORING BOOK This charming coloring book is the result of a 3rd grade project at Byrd Elementary School in Goochland. Ms. Sandra Barkley donated a copy to the Society. Thank you students for this wonderful book.

YEAR BOOKS The Governor, Goochland High School, 2003, 2004, 2006 year books donated by Dr. Frank Morgan and the Goochland County School Board.

UNIFORM World War II Marine uniform belonged to Henry Shelton. Donated by his daughter Frances Shelton Wingfield Lee.

Dedication of A New Virginia Historical Highway Marker in Goochland County...
THE 1936 VIRGINIA PRISON RECORDINGS



ABOVE: The rain proved no deterrent to supporters of the new Blues marker. Jan Ramsey, Kathleen Kilpatrick and Jim Eads can be seen in the top of this picture removing the cover from the marker.



RIGHT: Phyllis Silber (l-r), Director, Goochland Historical Society; Jan Ramsey; Jim Eads. Photographs by Fred Sorrell



ABOVE: Jan Ramsey (l-r), President of the James River Blues Society; Kathleen Kilpatrick, Director of the Virginia Department Historic Resources; Jim Eads, Chair of the Goochland County Board of Supervisors; Sam Pruitt, Warden, James River Correctional Center.

BELOW: Wording of the highway marker.

A historical highway marker, on Route 6 just west of the James River Correctional Center, was unveiled commemorating the 1936 visit of John Lomax to the State Farm Prison and the State Penitentiary to record quartets, banjo tunes, work songs, spirituals and blues. Jeffery Mabry, a Goochland County Historical Society board member served as coordinator and emcee for the event. Jeffery, Kathleen Kilpatrick, Director of the Virginia Department of Historic Resources; Jan Ramsey, President of the James River Blues Society, and Sam Pruitt, Warden of the James River Correctional Center, unveiled the marker.

After the dedication ceremony, a reception program was held at the Department of Corrections Academy for Staff Development. Remarks were made by Jim Eads, Chairman of the Goochland County Board of Supervisors; Kathleen Kilpatrick, Jerry Eggleston, Training Manager for the Department of Corrections Academy for Staff Development; and Phyllis Silber, Executive Director of the Historical Society. Gregg Kimball from the Library of Virginia gave a multimedia presentation entitled "The Prison Recordings" featuring original recordings from the Library of Congress. Kimball also provided a display of vintage items and photographs. The Emmaus Baptist Church Choir sang selections from the recordings. The Society wishes to thank all who participated, including its member volunteers and Clover Forest Plantation for their assistance in making the event a memorable occasion.

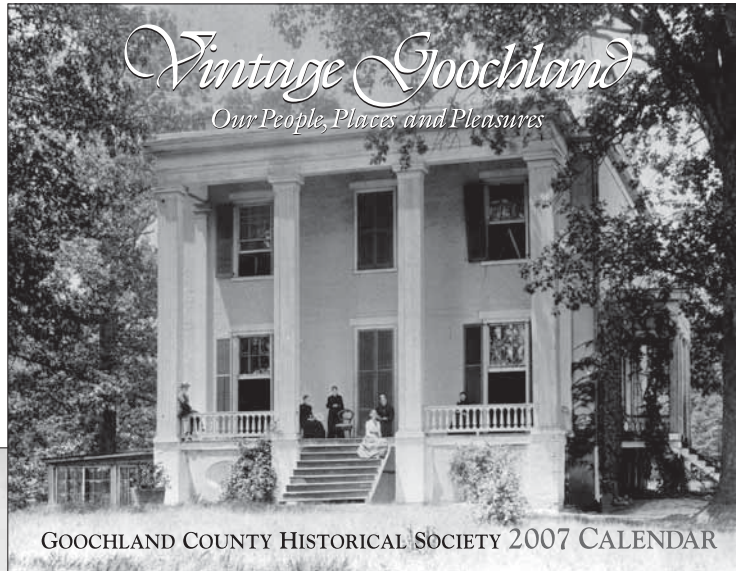
SA-70

THE 1936 VIRGINIA PRISON RECORDINGS

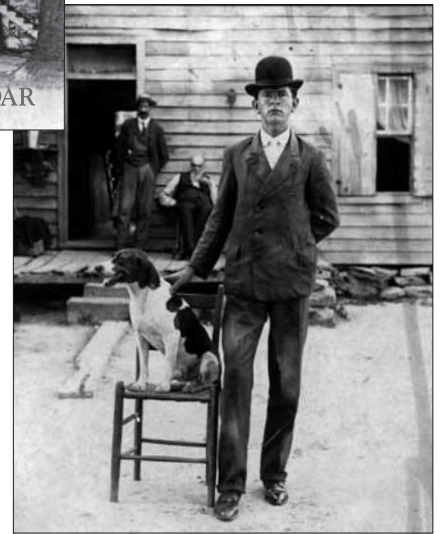
In 1936 famed folklorist John A. Lomax visited the Virginia State Prison Farm here and at the Virginia State Penitentiary in Richmond. Working for the Library of Congress' Archive of Folk Song, Lomax canvassed southern prisons in search of traditional African American music. On 13 and 14 June 1936, Lomax, assisted by Harold Spivacke, recorded quartets, banjo tunes, work songs, spirituals, and blues at the State Farm. Among the notable performers were inmates Jimmie Strother and Joe Lee. The Library of Congress first released songs from the sessions in the 1940s and they have appeared on many recordings since. These sessions are among the earliest aural records of Virginia's black folk-song tradition.

Department of Historic Resources, 2005

TAKE A PHOTOGRAPHIC JOURNEY BACK IN TIME AND EXPLORE THE RICH HERITAGE OF GOOCHLAND.



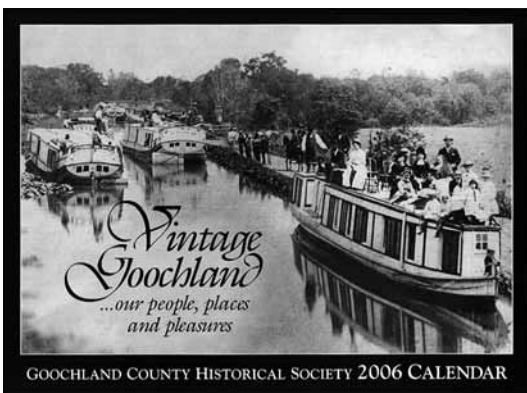
Enjoy fun scenes of Goochland's heritage EVERY day of the year in our specially designed photographic collection.



This specially created Calendar is unique to our county. It is beautifully illustrated with 15 sepia-toned photographs suitable for framing. Images chosen from the Society's collection depict Goochland people and places from years past. Size: 11" x 17" hanging. \$7.00

The Society's 2007 CALENDAR will go on sale October 1st.

A PHOTOGRAPHIC KEEPSAKE...
The 2006 Vintage Goochland Calendar is still available in limited supply.
...on sale, only \$4.00



GOOCHLAND YESTERDAY AND TODAY
by Cece Bullard

Reduced from \$40 to \$30

This unique book chronicles the story of Goochland from its 1728 origin to the present day through nearly 300 photographs—some never before published—and a fascinating and informative text.

8½" x 11" hard cover
192 pages including index

You may purchase items at the Society's Museum Shop, or from our website at www.goochlandhistory.org, or order by mail. To order by mail, please send us your name, complete mailing address, daytime telephone number and check to include the order amount plus 15% of the order amount for shipping and handling. Please make checks payable to the Goochland County Historical Society. *Thank you for supporting the Goochland County Historical Society.*

The Goochland County Historical Society is a non-profit organization founded and operated for the perpetuation and preservation of Goochland County heritage and tradition.

© Copyright 2006 by the Goochland County Historical Society
Phyllis Silber, Editor
Douglas Price, Designer

All rights reserved.

(804) 556-3966

Society Phone & Fax

Visit the Society's Website
www.goochlandhistory.org

Email the Society
goochlandhistory@verizon.net

Visit the Goochland Historical Society
The Society's headquarters are located a
half mile east of the Goochland Courthouse
at 2875 River Road West (Route 6).
Our summer hours are Tuesday - Friday,
10:00 a.m. - 3:00 p.m., or by appointment.
Those traveling long distances should call
the Society to confirm it will be open that
day. (804) 556-3966

Goochland County Historical Society
P. O. Box 602
Goochland, Virginia 23063

Nonprofit Org.
U.S. Postage
PAID
Goochland, VA
Permit No. 19



Goochland County Historical Society

Phyllis Silber, *Executive Director*

BOARD OF DIRECTORS 2006

Temple Bayliss, *President*

Sharon Perdue, *1st Vice President*

Sebastian Volcker, *2nd Vice President*

Louise Thompson, *Secretary*

Fred Sorrell, *Treasurer*

Betty Eades

Howard Cobb

Morton Eggleston

Kay Higgins

Jeffrey Mabry

Louisa Preston

Douglas Price

George Pritchard

Frances Truett

John Twombly IV

Carol Salmon, *Archivist*

Marty MacMillan, *President Emeritus*

John M. Williamson, Esq., *Registered Agent*



COMING SATURDAY, OCTOBER 21st...

The Goochland County Historical Society 2006 HISTORIC HOUSE TOUR

*Tickets will go on sale in September.
See details in the September Newsletter.*

